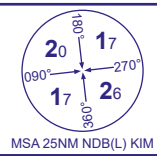
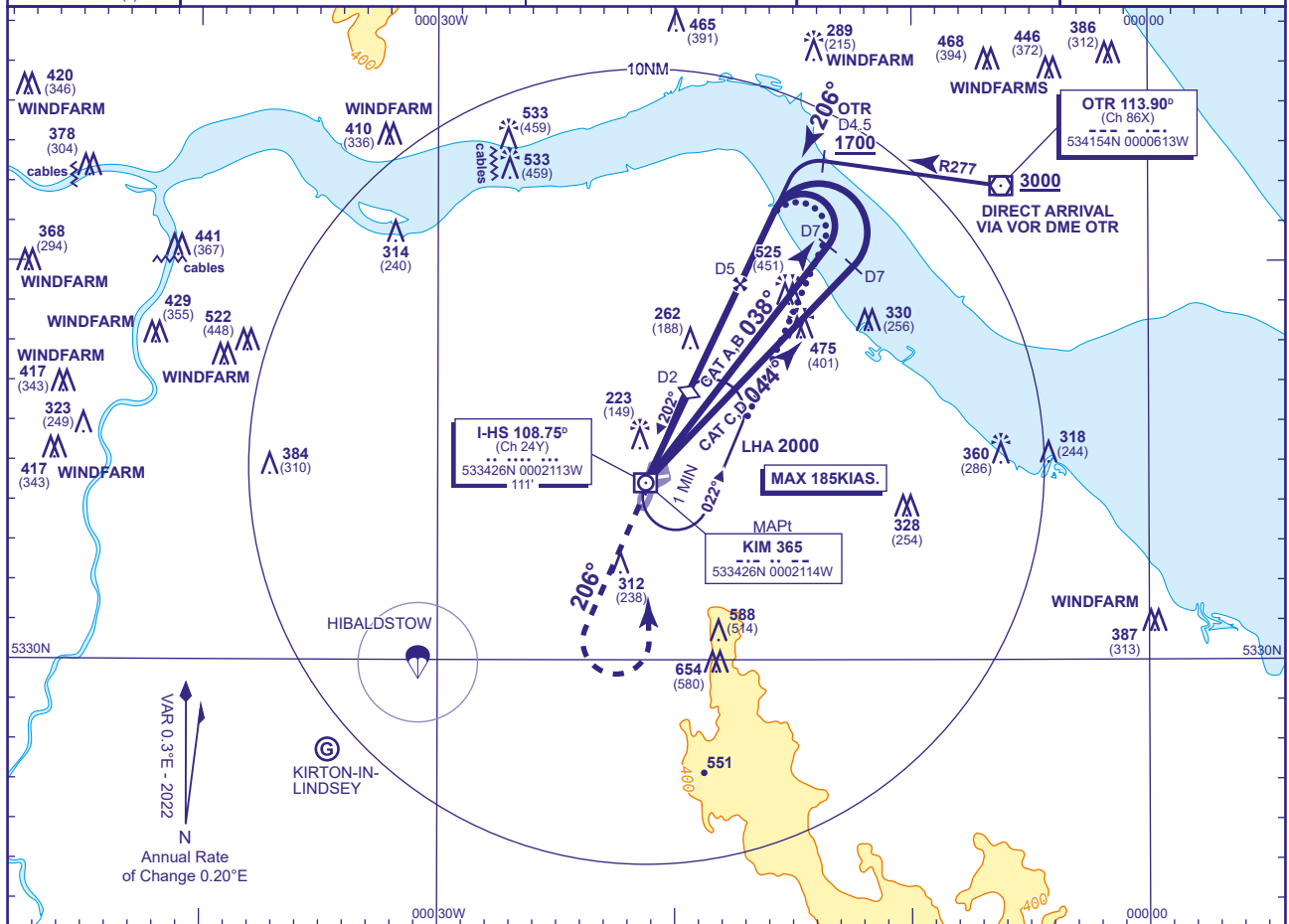


(ACFT CAT A,B,C,D)



TRANSITION ALTITUDE
3000



RECOMMENDED PROFILE Gradient 5.2%, 320FT/NM

DME I-HS	4	3	2 (SDF)
ALT(HGT)	1380(1306)	1070(896)	750(676)



DME I-HS zero ranged to THR RWY 20

Aircraft Category		A	B	C	D	Rate of descent	G/S KT	160	140	120	100	80
OCA (OCH)	WITH DME	550(476)	550(476)	550(476)	550(476)		FT/MIN	860	750	640	540	430
	NO DME	800(726)	800(726)	800(726)	800(726)							
VM(C)OCA (OCH AAL)	Total Area DME	690(569)	690(569)	990(869)	1050(929)							
	Total Area NO DME	800(679)	800(679)	990(869)	1050(929)							

ALTERNATIVE PROCEDURE EXTENDED HOLDING PATTERN

Overhead NDB(L) KIM at **2700** in holding pattern, turn left and descend on the extended outbound leg to **1700**(1626). At I-HS DME 7 turn left to intercept FAT inbound. When established continue as for Main Procedure.

DIRECT ARRIVAL VIA VOR DME OTR (Subject to ATC approval)

Overhead VOR DME OTR **not below 3000**, depart on R277 descending to **1700**(1626). At OTR DME 4.5 turn left to intercept extended FAT. When established continue as for Main Procedure.

AIRCRAFT UNABLE TO RECEIVE DME I-HS

As for Main and Alternative Procedures with DME except fly outbound for 3MIN (CAT A,B); 2MIN (CAT C,D) prior to base turn. When established on FAT descend to MDH.

NOTE Lowest altitude to commence procedure from hold is **2000**.

CHANGE (2/25): VOR OTR RECALIBRATED. OTR RADIALS REVISED.